

Lightcare

Save Energy for Brighter Future

Product Catalogue

Energy Saving Solutions



Vision

We aspire to become the leading energy conservation company serving industrial, commercial, domestic and public sectors, nationwide.

Mission

Our mission is to achieve customer satisfaction by superior after-sale services.

Background

Our lifestyles have changed significantly over the past century. So why still use lighting that is based on 19th century technology? Lightcare lighting technology can revolutionize your decor, brighten up your home, help you cheer up or focus better and enliven your spaces. Lighting products have evolved considerably. LED lights are becoming increasingly popular as their advantages become popular, economical and readily available. We at Lightcare, always seek to provide you with a great range of LEDs, at reasonable prices. Experts at Lightcare design each and every product with an ambition to make the best and the most incredible experience affordable to you while making sure of the superior quality of the product range. We totally understand your needs and bring you whatever it takes to ensure 100% satisfaction at your end. Our philosophy is to maintain the track of our development as a modern company that enthusiastically sets trends in terms of design and technology as well as in terms of care and respect for the environment.

Who We Are

We are an Energy Conservation Company

Lightcare Pvt Ltd. is an Energy Solutions Providing Company, specialist in the field of Energy Conservation. With a vast experience, Lightcare is serving industrial and commercial market with its energy saving products. Lightcare Pvt Ltd helps its clients take control of their power bills. Taking into account the ever increasing electricity prices, it is no longer possible for the businesses to overlook the operational costs.

We offer a wide range of LED Lights and solar solutions to meet the diversified needs of local and international markets. Lightcare is committed to provide reliable products in compliance with the international standards. All the products of Lightcare are protected by Warranty.

Company's Management

The company is managed by a Board of Directors comprising of a Chief Executive, a Company Secretary and a Director. Day to day operations are managed and looked after by the Company Secretary, assisted by the departmental heads of the organization. The Sales and Marketing Department is the key department of the organization whereas the Accounts and the After-sale Services Departments work as supporting departments.

Services

Lightcare Pvt Ltd offers a variety of services including Energy Conservation Projects, Supply and Installation of Lights and other related electrical products and equipment, Solar Projects and other related electrical projects. Most of the products are imported under the brand name of Lightcare.

Lightcare is also fully equipped to undertake turnkey LED Lighting Projects including supply and erection of Street Poles along with civil works, supplies and installation of LEDs and conventional lights.

How We Work

We help our clients with detailed studies and feasibility reports. It starts with an on-site energy audit where we identify the energy leakages and propose a suitable replacement plan. All the proposals are backed by financial modeling and figures to give a clear understanding.

Field of Specialization

Lightcare Pvt Ltd is primarily an Energy Conservation Company with expertise in LED Lighting and Solar Solutions. We have our own brand named Lightcare. We import superior quality LED lights to fulfill the demands of our corporate and industrial customer. Each product of Lightcare is protected by Two Years of Warranty. We strive hard to achieve customer satisfaction through efficient after sales services to the door step of our valuable client.

Human Resources

Lightcare Pvt Ltd understands the need of adequately skilled human resource to undertake the projects professionally. Keeping this fact in mind, Lightcare has electrical and electronics engineers on its payroll while civil engineers and architects are available on need basis. Lightcare has total staff of 20 people while non skilled labor is hired only for projects depending upon the need and complexity of the project.

Who We Work For

We work for Industry, Corporate Sector, Universities, Schools, Commercial Buildings, Shops, Household.

Track Lights



LED Track Lights

Specifications:

Model: TLA2010-Premium
 Input Voltage: 100-240VAC 50/60Hz
 Light Source: LED
 LED: COB
 Power: 20W
 Color: Warm White/Cool White
 Lumen: 2000lm
 CRI: >70
 Beam Angle: 24 deg
 Operational Temperature: -20-+50
 Fixture Material: Aluminium
 Working Life: 50,000 Hrs
 Size: ϕ 110x62mm



TLA2008



TLA2008



TLA2008



TLA2008



TLA2008



TLA2008



TLA2008



TLA2008



TLA2008

Model #	Power	LED Type	CRI	Lumen	Beam Angle	Input Voltage	Size
TLA1006	10W	COB	>70	1000 lm	15	AC100-220V	ϕ 90x70mm
TLA1502	15W	COB	>70	1500 lm	24	AC100-220V	ϕ 90x70mm
TLA2004	20W	COB	>70	2000lm	24	AC100-220V	ϕ 165x100mm
TLA2008	20W	COB	>70	2000lm	24	AC100-220V	ϕ 135x92mm
TLA2009	20W	COB	>70	2000lm	24	AC100-220V	ϕ 135x92mm
TLA2012	20W	COB	>70	2000lm	24	AC100-220V	ϕ 135x92mm
TLA2013	20/30W	COB	>70	3000lm	24	AC100-220V	ϕ 165x100mm
TLA2014	20W	COB	>70	2000lm	24	AC100-220V	ϕ 90x70mm

Panel Lights



LED Panel Lights

PLS18W



Specifications:

Model: PLS18W-Ultra
 Type: Recessed Square LED
 Panel Light }
 Chipset: San'an/Epistar
 LED Type: SMD2835
 Lamp Rated Power: 18W
 LED Qty: 80Pcs
 Total Luminous Flux: 1800lm
 Color Temperature (CCT)
 Cool White: 6000-6500k
 Pure White: 4000-4500k
 Warm White: 2700-3200k
 Input Voltage: 85-265VAC
 Frequency: 50-60Hz
 Power Factor (PF): 0.9
 Total Harmonics Distortion (THDs): <20%
 Storage Temperature: -40-+60C
 Working Environment: -20-+45C; 10-95RH
 Working Life: >50,000 Hrs
 IP Rating: IP20
 Product Dimension (mm): 225x225x12mm
 Open Size: 205x205



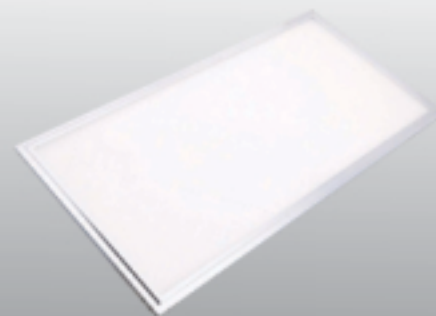
Model #	Power	Size (mm)	Open Size (mm)	Chip	LED Type	LED Qty	Voltage	IP	Lumen
PLS3W-U	3W	85x85x12	50x50	EPISTAR	SMD2835	15	85-265VAC	IP20	300lm
PLS6W-U	6W	120x120x12	110x110	EPISTAR	SMD2835	30	85-265VAC	IP20	600lm
PLS9W-U	9W	145x145x12	135x135	EPISTAR	SMD2835	48	85-265VAC	IP20	900lm
PLS12W-U	12W	170x170x12	160x160	EPISTAR	SMD2835	60	85-265VAC	IP20	1200lm
PLS15W-U	15W	200x200x12	190x190	EPISTAR	SMD2835	72	85-265VAC	IP20	1500lm
PLS18W-U	18W	225x225x12	205x205	EPISTAR	SMD2835	80	85-265VAC	IP20	1800lm
PLS24W-U	24W	240x240x12	225x225	EPISTAR	SMD2835	120	85-265VAC	IP20	2400lm

LED Panel Lights

Specifications:

Model: PLS600x600mm-Prime
 Type: Recessed Square Panel Lights
 Chipset: San'an/Epistar
 LED Type: SMD2835
 Lamp Rated Power: 40W/48W
 LED Qty: 216Pcs
 Total Luminous Flux: 4000-4800lm
 Color Temperature (CCT)
 Cool White: 6000-6500k
 Pure White: 4000-4500k
 Warm White: 2700-3200k

Input Voltage: 85-265VAC
 Frequency: 50-60Hz
 Power Factor (PF): 0.9
 Total Harmonics Distortion (THDs): <20%
 Storage Temperature: -40-+60C
 Working Environment: -20-+45C; 10-95RH
 Working Life: >50,000 Hrs
 IP Rating: IP20
 Product Dimension (mm): 600x600x10mm
 Material: Aluminium Alloy + Acrylic



PLS600x1200-P

Model #	Power	Size (mm)	Chip	LED Type	Voltage	IP	Lumen
PLS300x300-P	20W	300x300x10mm	EPISTAR	SMD2835	85-265VAC	IP20	2000lm
PLS300x600-P	30W	300x600x10mm	EPISTAR	SMD2835	85-265VAC	IP20	3000lm
PLS300x1200-P	40W	300x1200x10mm	EPISTAR	SMD2835	85-265VAC	IP20	4000lm
PLS600x600-P	40W	600x600x10mm	EPISTAR	SMD2835	85-265VAC	IP20	4000lm
PLS600x1200-P	80W	600x1200x10mm	EPISTAR	SMD2835	85-265VAC	IP20	8000lm

LED Panel Lights

Specifications:

Model: PLR12W-Ultra
Type: Recessed Round LED Panel Light
Chipset: San'an/Epistar
LED Type: SMD2835
Lamp Rated Power: 12W
LED Qty: 60Pcs
Total Luminous Flux: 1200lm
Color Temperature (CCT)
 Cool White: 6000-6500k
 Pure White: 4000-4500k
 Warm White: 2700-3200k
Input Voltage: 85-265VAC
Frequency: 50-60Hz
Power Factor (PF): 0.9
Total Harmonics Distortion (THDs): <20%
Storage Temperature: -40-+60C
Working Environment: -20-+45C;10-95RH
Working Life: >50,000 Hrs
IP Rating: IP20
Product Dimension (mm): ϕ 174x12mm
Open Size: 205x205 ϕ 150



PLR12-U



Model #	Power	Size (mm)	Open Size (mm)	Chip	LED Type	LED Qty	Voltage	IP	Lumen
PLR3W-U	3W	ϕ 85x12	ϕ 65	EPISTAR	SMD2835	15	85-265VAC	IP20	300lm
PLR4W-U	4W	ϕ 105x12	ϕ 85	EPISTAR	SMD2835	20	85-265VAC	IP20	400lm
PLR6W-U	6W	ϕ 120x12	ϕ 100	EPISTAR	SMD2835	30	85-265VAC	IP20	600lm
PLR9W-U	9W	ϕ 146x12	ϕ 128	EPISTAR	SMD2835	45	85-265VAC	IP20	900lm
PLR12W-U	12W	ϕ 174X12	ϕ 150	EPISTAR	SMD2835	60	85-265VAC	IP20	1200lm
PLR15W-U	15W	ϕ 195x12	ϕ 170	EPISTAR	SMD2835	75	85-265VAC	IP20	1500lm
PLR18W-U	18W	ϕ 225x12	ϕ 200	EPISTAR	SMD2835	90	85-265VAC	IP20	1800lm

LED Panel Lights

Specifications:

Model:SPL-S25W-Ultra
Type: Surface Mounted LED Panel Light
Chipset: San'an/Epistar
LED Type: SMD2835
Lamp Rated Power: 24W
LED Qty: 120Pcs
Total Luminous Flux:2400lm
Color Temperature (CCT)
 Cool White: 6000-6500k
 Pure White: 4000-4500k
 Warm White: 2700-3200k
Input Voltage: 85-265VAC
Frequency: 50-60Hz
Power Factor (PF): 0.9
Total Harmonics Distortion (THDs): <20%
Storage Temperature: -40-+60C
Working Environment: -20-+45C;10-95RH
Working Life: >50,000 Hrs
IP Rating: IP20
Product Dimension (mm):300x300x40mm



SPL-S25W-U



Model #	Power	Size (mm)	Chip	LED Type	LED Qty	Voltage	IP	Lumen
SPL-R6W-U	6W	φ170x40	EPISTAR	SMD2835	20	85-265VAC	IP20	600lm
SPL-R12W-U	12W	φ120x40	EPISTAR	SMD2835	60	85-265VAC	IP20	1200lm
SPL-R18W-U	18W	φ220x40	EPISTAR	SMD2835	80	85-265VAC	IP20	1800lm
SPL-S6W-U	6W	φ120x120x40	EPISTAR	SMD2835	20	85-265VAC	IP20	600lm
SPL-S12W-U	12W	φ170x170x40	EPISTAR	SMD2835	60	85-265VAC	IP20	1200lm
SPL-S18W-U	18W	φ220x220x40	EPISTAR	SMD2835	80	85-265VAC	IP20	1800lm
SPL-S25W-U	25W	φ300x300x40	EPISTAR	SMD2835	120	85-265VAC	IP20	2500lm

Down Lights



LED Down Lights

Specifications:

Model: DLR12W-Prima

Type: 5 Inch Downlight with
SMDs at back

Chipset: San'an/Epistar

LED Type: SMD2835

Lamp Rated Power: 12W

Total Luminous Flux: 1200lm

Color Temperature (CCT)

Cool White: 6000-6500k

Warm White: 2700-3200k

Input Voltage: 100-265VAC

Frequency: 50-60Hz

Input Voltage: 100-265VAC; 50-60Hz

Storage Temperature: -40-+60C

Working Environment: -20-+45C; 10-95RH

Working Life: >50,000 Hrs

IP Rating: IP20

Cutout Size: ϕ 127mm



DLR7W



DLR12W

Model #	Power	Size (mm)	Chip	LED Type	Voltage	IP	Lumen
DLR4W-P	6W	ϕ 75mm	EPISTAR	SMD2835	85-265VAC	IP20	600lm
DLR7W-P	7W	ϕ 75mm	EPISTAR	SMD2835	85-265VAC	IP20	700lm
DLR12W-P	12W	ϕ 127mm	EPISTAR	SMD2835	85-265VAC	IP20	1200lm
DLR18W-P	18W	ϕ 127mm	EPISTAR	SMD2835	85-265VAC	IP20	1800lm

COB Down Lights

Specifications:

Model: DLC180R-COB
Type: COB Downlight for 6.6 inch hole size
Chipset: San'an/Epistar
LED Type: COB
Lamp Rated Power: 15W
Total Luminous Flux: 1500lm
Beam Angle: 120 Deg
Color Temperature (CCT)
 Cool White: 6000-6500k
 Warm White: 2700-3200k
Input Voltage: 100-265VAC
Frequency: 50-60Hz
Input Voltage: 85-265VAC; 50-60Hz
Storage Temperature: -40-+60C
Working Environment: -20-+45C; 10-95RH
Working Life: >50,000 Hrs
IP Rating: IP20
Product Size: ϕ 180x63mm
Hole Size: ϕ 170mm



DYB3W



DLC15W

Model #	Power	Body Color	LED Type	Beam Angle	Voltage	Product Size	Hole Size	Lumen
DLC110R-C	5W	White	COB	120 Deg	85-265VAC	ϕ 110x63mm	ϕ 100mm	500lm
DLC160R-C	10W	White	COB	120 Deg	85-265VAC	ϕ 160x63mm	ϕ 150mm	1000lm
DLC180R-C	15W	White	COB	120 Deg	85-265VAC	ϕ 180x63mm	ϕ 170mm	1500lm
DYB3W-C	3W	Wht/Sivr/Gld	COB	120 Deg	85-265VAC	ϕ 85x55mm	ϕ 70mm	300lm
DYB5W-C	5W	Wht/Sivr/Gld	COB	120 Deg	85-265VAC	ϕ 85x55mm	ϕ 70mm	500lm
DYB7W-C	7W	Wht/Sivr/Gld	COB	120 Deg	85-265VAC	ϕ 120x55mm	ϕ 100mm	700lm

Ceiling Flood Lights

Specifications:

Model: CFL40W-COB
 Type: COB Ceiling Flood
 Lights for displays
 Chipset: San'an/Epistar
 LED Type: COB
 Lamp Rated Power: 40W
 Total Luminous Flux: 4000lm
 Color Temperature (CCT)
 Cool White: 6000-6500k
 Warm White: 2700-3200k
 Input Voltage: 85-265VAC
 Frequency: 50-60Hz
 Input Voltage: 100-265VAC; 50-60Hz
 Storage Temperature: -40-+60C
 Working Environment: -20-+45C; 10-95RH
 Working Life: >50,000 Hrs



CFL40W



GMRL15W

Model #	Power	Chip	LED Type	Voltage	Lumen
CFS20W-C	20W	EPISTAR	COB	85-265VAC	2000lm
CFS40W-C	40W	EPISTAR	COB	85-265VAC	4000lm
GBR10W-C	10W	EPISTAR	COB	85-265VAC	1000lm
GBR15W-C	15W	EPISTAR	COB	85-265VAC	1500lm
GBR20W-C	20W	EPISTAR	COB	85-265VAC	2000lm



DECOUPE-POINÇONNAGE

Tube Lights

LED Tube Lights

Specifications:

Model: T8-1200mm-18W
Type: LED Tube Light in replacement of Fluorescent Tube Lights
Chipset: San'an/Epistar
LED Type: SMD2835
Lamp Rated Power: 18W
Total Luminous Flux: 1980lm
Color Temperature (CCT)
 Cool White: 6000-6500k
 Pure White: 4000-4500k
 Warm White: 2700-3200k
Cover: Clear/Frosted/Semi-Clear
Input Voltage: 85-265VAC
Frequency: 50-60Hz
Power Factor (PF): 0.97
Total Harmonics Distortion (THDs): <20%
Storage Temperature: -40-+80C
Working Environment: -37-+55C
Working Life: >50,000 Hrs
Length: 1200mm
Material: Alloy Aluminium Housing + PC Cover
Driver: Constant Current Driver



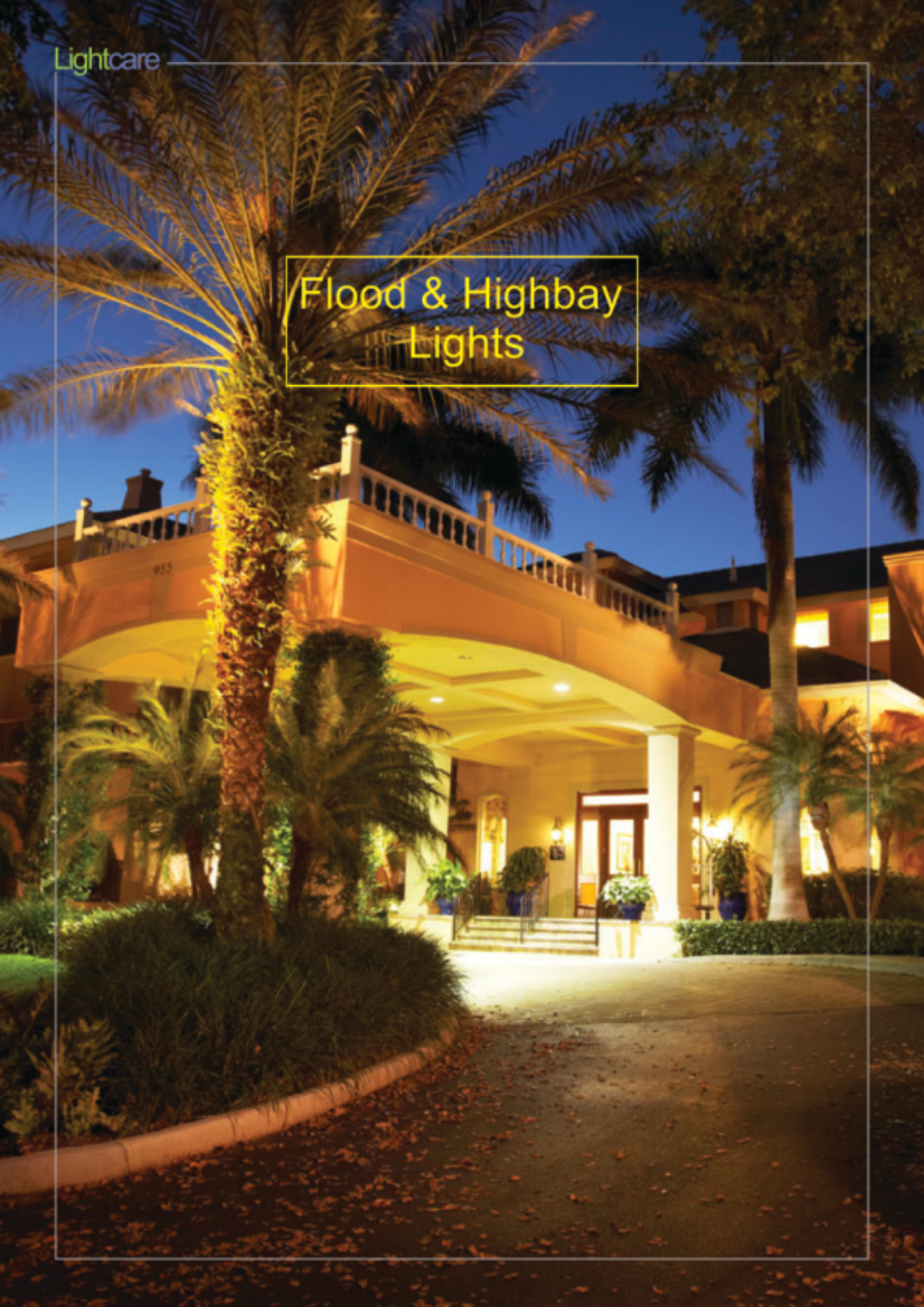
T8 1200mm



FT 1200mm

Model #	Power	Length	Chip	LED Type	Voltage	CRI	Lumen
T8-600mm-10W	16W	600mm	EPISTAR	SMD2835	85-265VAC	80	1760lm
T8-1200mm-16W	10W	1200mm	EPISTAR	SMD2835	85-265VAC	80	1100lm
T8-1200mm-18W	18W	1200mm	EPISTAR	SMD2835	85-265VAC	80	1980lm
T8-1200mm-22W	22W	1200mm	EPISTAR	SMD2835	85-265VAC	80	2420lm
FT600mm-9W	9W	600mm	San'an	SMD2835	85-265VAC	70	990lm
FT1200mm-18W	18W	1200mm	San'an	SMD2835	85-265VAC	70	1800lm

Flood & Highbay Lights



LED Flood Lights

Economy Series

Specifications:

Model: FLS200W-ECS
Type: LED Flood Light in Replacement of Conventional Flood Lights
Equivalent to*: 700-800 High Pressure Sodium Lamps
Chipset: Epistar
LED Type: COB
Lamp Rated Power: 200W
Total Luminous Flux: 20000lm
Color Temperature (CCT)
 Cool White: 6000-6500k
 Warm White: 2700-3200k
Beam Angle: 120 Deg
Cover: Clear Tempered Glass
Input Voltage: 85-265VAC
Frequency: 50-60Hz
Power Factor (PF): 0.97
Total Harmonics Distortion (THDs): <20%
Storage Temperature: -40-+80C
Working Environment: -37-+55C
Working Life: >50,000 Hrs
IP Class: IP65
Driver: Constant Current Driver



FLS200W-ECS



FLS100W-ECS



FLS10W-ECS



FLS150W-ECS



FLS20W-ECS



FLS70W-ECS

Model #	Power	Equivalent to*	COB Brand	Voltage	IP Class	CRI	Beam Angle	Lumen
FLS10W-ECS	10W	50W	EPISTAR	85-265VAC	IP65	>70	120	1000lm
FLS20W-ECS	20W	80W	EPISTAR	85-265VAC	IP65	>70	120	2000lm
FLS30W-ECS	30W	100W	EPISTAR	85-265VAC	IP65	>70	120	3000lm
FLS50W-ECS	50W	150W	EPISTAR	85-265VAC	IP65	>70	120	5000lm
FLS70W-ECS	70W	200W	EPISTAR	85-265VAC	IP65	>70	120	7000lm
FLS100W-ECS	100W	250W	EPISTAR	85-265VAC	IP65	>70	120	10000lm
FLS150W-ECS	150W	400W	EPISTAR	85-265VAC	IP65	>70	120	15000lm
FLS200W-ECS	200W	700W	EPISTAR	85-265VAC	IP65	>70	120	20000lm

LED HIGHBAY LIGHT

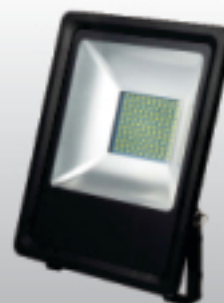
Economy Series

Specifications:

Model: LC-NFL-100WH
Type: LED Flood Light in Replacement of Conventional Flood Lights
Equivalent to*: 200-350 High Pressure Sodium Lamps
Chipset: Bridgelux
LED Type: SMD
Lamp Rated Power: 100W
Total Luminous Flux: 10000lm
Color Temperature (CCT)
 Cool White: 6000-6500K
 Warm White: 2700-3200k
Beam Angle: 120 Deg
Cover: Lens
Input Voltage: AC100-240
Frequency: 50-60Hz
Power Factor (PF): 0.95
Total Harmonics Distortion (THDs): <20%
Storage Temperature: -40-+80C
Working Environment: -37-+55C
Working Life: >50,000 Hrs
Driver: Constant Current Driver



LC-NFL-100WH



LC-NFL-50WH

Model #	Power	Equivalent to*	SMD Brand	Voltage	CRI	Beam Angle	Lumen
LC-NFL-Series	50W	100W	Epistar	100-240VAC	>70	120	5000lm
	80W	250W	Epistar	100-240VAC	>70	120	8000lm
	100W	350W	Epistar	100-240VAC	>70	120	10000lm
	150W	450W	Epistar	100-240VAC	>70	120	15000lm
	180W	500W	Epistar	100-240VAC	>70	120	18000lm
	200W	600W	Epistar	100-240VAC	>70	120	20000lm

LED Flood Lights

Premium Series

Specifications:

Model: LC-FL-150WHK
 Type: LED FLOOD Light in Replacement
 of Conventional Flood Lights
 Equivalent to*: 700-800 High Pressure
 Sodium Lamps
 Chipset: Philips
 LED Type: SMD
 Lamp Rated Power: 150W
 Total Luminous Flux: 16500lm
 Color Temperature (CCT)
 Cool White: 6000-6500k
 Warm White: 2700-3200k
 Beam Angle: 120 Deg
 Cover: Clear Tempered Glass
 Input Voltage: 85-265VAC
 Frequency: 50-60Hz
 Power Factor (PF): 0.95
 Total Harmonics Distortion (THDs): <20%
 Storage Temperature: -40-+80C
 Working Environment: -37-+55C
 Working Life: >50,000 Hrs
 IP Class: IP65
 Driver: Mean well Constant Current Driver



LC-FL-150WHK



Model #	Power	Equivalent to*	SMD Brand	Voltage	IP Class	CRI	Beam Angle	Lumen
LC-FL-100WHK	100W	300W	PHILIPS	85-265VAC	IP65	>70	120	11000lm
LC-FL-120WHK	120W	450W	PHILIPS	85-265VAC	IP65	>70	120	13200lm

LED Flood Lights

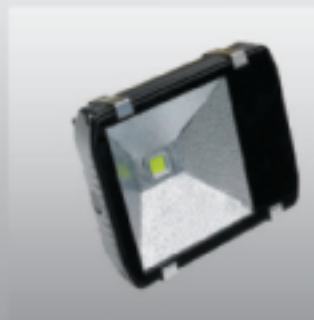
Premium Series

Specifications:

Model: FLS150W-Premium
Type: LED Flood Light in Replacement of Conventional Flood Lights
Equivalent to*: 400-500 High Pressure Sodium Lamps
Chipset: Bridgelux
Driver: Meanwell Constant Current Driver
LED Type: COB
Lamp Rated Power: 150W
Total Luminous Flux: 15000lm
Color Temperature (CCT)
 Cool White: 6000-6500k
 Warm White: 2700-3200k
Beam Angle: 120 Deg
Cover: Clear Tempered Glass
Input Voltage: 85-265VAC
Frequency: 50-60Hz
Power Factor (PF): 0.97
Total Harmonics Distortion (THDs): <20%
Working Environment: -30-+55C
Working Life: >50,000 Hrs
IP Class: IP65



FL150W-P



FL100W-P



FL210W-P

Model #	Power	Equivalent to*	COB Brand	Driver Brand	Voltage	IP Class	CRI	Beam Angle	Lumen
FL100W-P	100W	250W	Bridgelux	Meanwell	85-265VAC	IP65	>80	140	1000LM
FL150W-P	150W	400W	Bridgelux	Meanwell	85-265VAC	IP65	>80	140	15000LM
FL210W-P	210W	700W	Bridgelux	Meanwell	85-265VAC	IP65	>80	140	20000LM

Flood & Highbay Light

Premium Series

Specifications:

Model: LC-F31A-H Series
 Type: LED Flood Light in Replacement
 of Conventional Flood Lights
 Equivalent to*: 700-800 High Pressure
 Sodium Lamps
 Chipset: Philips
 LED Type: SMD
 Lamp Rated Power: 150W
 Total Luminous Flux: 1650lm
 Color Temperature (CCT)
 Cool White: 5700-6000k
 Warm White: 2700-3200k
 Beam Angle: 110 Deg
 Cover: Lens
 Input Voltage: AC100-240
 Frequency: 50-60Hz
 Power Factor (PF): 0.95
 Total Harmonics Distortion (THDs): <20%
 Storage Temperature: -40-+80C
 Working Environment: -37-+55C
 Working Life: >50,000 Hrs
 IP Class: IP67
 Driver: Philips Constant Current Driver
 Surge Protection: 10KV External



LC-F31A-H



Model #	Power	Equivalent to*	SMD Brand	Voltage	IP Class	CRI	Beam Angle	Lumen
LC-TF31A-1	40W	120W	PHILIPS	100-240VAC	IP67	>70	120	4400lm
	50W	150W	PHILIPS	100-240VAC	IP67	>70	120	5500lm
LC-TF31A-2	80W	200W	PHILIPS	100-240VAC	IP67	>70	120	8800lm
	100W	300W	PHILIPS	100-240VAC	IP67	>70	120	11000lm
LC-TF31A-3	120W	350W	PHILIPS	100-240VAC	IP67	>70	120	13200lm
	150W	450W	PHILIPS	100-240VAC	IP67	>70	120	16500lm

LED HIGHBAY LIGHT

Economy Series

Specifications:

Model: LC-HB-150WH
Type: LED Highbay Light in Replacement of Conventional Flood Lights
Equivalent to*: 700-800 High Pressure Sodium Lamps
Chipset: Bridgelux
LED Type: SMD
Lamp Rated Power: 150W
Total Luminous Flux: 15000lm
Color Temperature (CCT)
 Cool White: 6000-6500K
 Warm White: 2700-3200k
Beam Angle: 120 Deg
Cover: Lens
Input Voltage: AC100-240
Frequency: 50-60Hz
Power Factor (PF): 0.95
Total Harmonics Distortion (THDs): <20%
Storage Temperature: -40-+80C
Working Environment: -37-+55C
Working Life: >50,000 Hrs
Driver: Constant Current Driver



LC-HB-150WH



LC-UFO-150WH

Model #	Power	Equivalent to*	SMD Brand	Voltage	CRI	Beam Angle	Lumen
LC-HB-150WH	50W	150W	Bridgelux	100-240VAC	>70	120	5000lm
	100W	300W	Bridgelux	100-240VAC	>70	120	10000lm
	150W	450W	Bridgelux	100-240VAC	>70	120	15000lm
LC-UFO-150WH	50W	150W	Bridgelux	100-240VAC	>70	120	5000lm
	100W	300W	Bridgelux	100-240VAC	>70	120	10000lm
	150W	450W	Bridgelux	100-240VAC	>70	120	15000lm

Street Lights



LED Street Lights

Economy Series

Specifications:

Model: SLB60W-ECS
Type: LED Street Light in Replacement of Conventional Street Lights
Equivalent to*: 150W High Pressure Sodium Lamps
Chipset: Epistar
Driver: Constant Current Driver
LED Type: COB
Lamp Rated Power: 60W
Total Luminous Flux: 6000lm
Color Temperature (CCT)
 Cool White: 6000-6500k
 Warm White: 2700-3200k
Beam Angle: 140 Deg
Cover: Dispersion lens
Input Voltage: 85-265VAC
Frequency: 50-60Hz
Power Factor (PF): >0.95
Total Harmonics Distortion (THDs): <20%
Working Environment: -30-+55C
Working Humidity: -10-90%RH
Working Life: >50,000 Hrs
IP Class: IP65



SLB60-ECS



SLB30W-ECS

Model #	Power	Equivalent to*	COB Brand	Voltage	IP Class	CRI	Beam Angle	Lumen
SLB30W-ECS	30W	85W	EPISTAR	85-265VAC	IP65	>70	140	3000lm
SLB50W-ECS	50W	150W	EPISTAR	85-265VAC	IP65	>70	140	5000lm
SLB60W-ECS	60W	150W	EPISTAR	85-265VAC	IP65	>70	140	6000lm
SLB100W-ECS	100W	250W	EPISTAR	85-265VAC	IP65	>70	140	10000lm

LED Street Lights

Economy Series

Specifications:

Model: LC-SLW-WH
 Type: LED Street Light in Replacement of
 Conventional Street Lights
 Equivalent to*: 250W High Pressure
 Sodium Lamps
 Chipset: Epistar
 Driver: Constant Current Driver
 LED Type: High Power LED
 Lamp Rated Power: 100W
 Total Luminous Flux: 10000lm
 Color Temperature (CCT)
 Cool White: 6000-6500k
 Warm White: 2700-3200k
 Beam Angle: 140 Deg
 Cover: Clear Tempered Glass
 Input Voltage: 85-265VAC
 Frequency: 50-60Hz
 Power Factor (PF): >0.95
 Total Harmonics Distortion (THDs): <20%
 Working Environment: -30-+55C
 Working Humidity: -10-90%RH
 Working Life: >50,000 Hrs
 IP Class: IP65



LC-SLW-WH



Model #	Power	Equivalent to*	SMD Brand	Voltage	CRI	Beam Angle	Lumen
LC-SLW-WH	60W	150W	Bridgelux	100-240VAC	>70	70x140	6000lm
	80W	250W	Bridgelux	100-240VAC	>70	70x140	8000lm
	100W	350W	Bridgelux	100-240VAC	>70	70x140	10000lm
	120w	450W	Bridgelux	100-240VAC	>70	70x140	12000lm

LED Street Lights

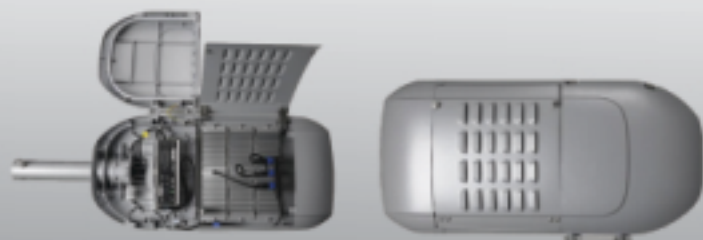
Premium Series

Specifications:

Model: LC-T19A Series
Type: LED Street Light in Replacement of Conventional Street Lights
Equivalent to*: 700-800 High Pressure Sodium Lamps
Chipset: Philips
LED Type: SMD
Lamp Rated Power: 120 W
Total Luminous Flux: 13200lm
Color Temperature (CCT)
 Cool White: 5700-6000
 Warm White: 2700-3200k
Beam Angle: 70-140 Deg
Cover: Lens
Input Voltage: AC100-240
Frequency: 50-60Hz
Power Factor (PF): 0.95
Total Harmonics Distortion (THDs): <20%
Storage Temperature: -40-+80C
Working Environment: -37-+55C
Working Life: >50,000 Hrs
IP Class: IP65
Driver: Philips Constant Current Driver
Surge Protection: 10KV External



LC-T19A-2



Model #	Power	Equivalent to*	SMD Brand	Voltage	IP Class	CRI	Beam Angle	Lumen
LC-TF31A-1	50W	120W	PHILIPS	100-240VAC	IP65	>70	70x140	5500lm
	60W	150W	PHILIPS	100-240VAC	IP65	>70	70x140	6600lm
LC-TF31A-2	80W	200W	PHILIPS	100-240VAC	IP65	>70	70x140	8800lm
	120W	300W	PHILIPS	100-240VAC	IP65	>70	70x140	13200lm
LC-TF31A-3	150W	350W	PHILIPS	100-240VAC	IP65	>70	70x140	16500lm
	200W	450W	PHILIPS	100-240VAC	IP65	>70	70x140	22000lm

LED Street Lights

Premium Series

Specifications:

Model: LC-SL-150WHK
 Type: LED Street Light in Replacement
 of Conventional Flood Lights
 Equivalent to*: 700-800 High Pressure
 Sodium Lamps
 Chipset: Philips
 LED Type: SMD
 Lamp Rated Power: 150W
 Total Luminous Flux: 16500lm
 Color Temperature (CCT)
 Cool White: 6000-6500k
 Warm White: 2700-3200k
 Beam Angle: 70/140 Deg
 Cover: Clear Tempered Glass
 Input Voltage: 85-265VAC
 Frequency: 50-60Hz
 Power Factor (PF): 0.95
 Total Harmonics Distortion (THDs): <20%
 Storage Temperature: -40-+80C
 Working Environment: -37-+55C
 Working Life: >50,000 Hrs
 IP Class: IP65
 Driver: Mean well Constant Current Driver



LC-SL-150WHK



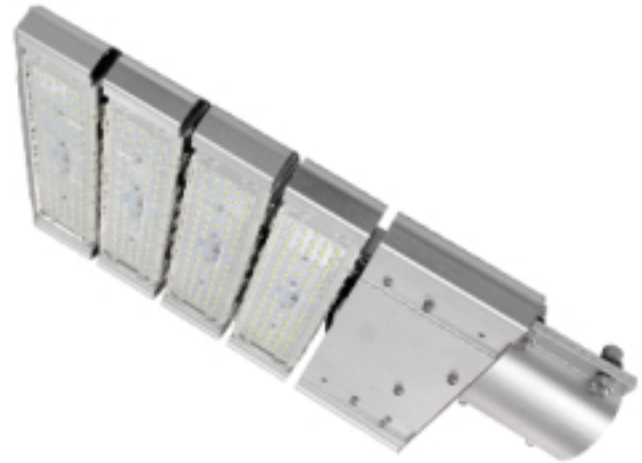
Model #	Power	Equivalent to*	SMD Brand	Voltage	IP Class	CRI	Beam Angle	Lumen
LC-FL-100WHK	100W	300W	PHILIPS	85-265VAC	IP65	>70	120	11000lm
LC-FL-120WHK	120W	450W	PHILIPS	85-265VAC	IP65	>70	120	13200lm

LED Street Lights

Premium Series

Specifications:

Model: LC-31A-S Series
Type: LED Street Light in Replacement of Conventional Street Lights
Equivalent to*: 700-800 High Pressure Sodium Lamps
Chipset: Philips
LED Type: SMD
Lamp Rated Power: 120 W
Total Luminous Flux: 13200lm
Color Temperature (CCT)
 Cool White: 5700-6000
 Warm White: 2700-3200k
Beam Angle: 70-140 Deg
Cover: Lens
Input Voltage: AC100-240
Frequency: 50-60Hz
Power Factor (PF): 0.95
Total Harmonics Distortion (THDs): <20%
Storage Temperature: -40-+80C
Working Environment: -37-+55C
Working Life: >50,000 Hrs
IP Class: IP65
Driver: Philips Constant Current Driver
Surge Protection: 10KV External



LC-31A-S2



Model #	Power	Equivalent to*	SMD Brand	Voltage	IP Class	CRI	Beam Angle	Lumen
LC-31A-S1	60W	150W	PHILIPS	100-240VAC	IP65	>80	70x140	6600lm
LC-31A-S3	150W	450W	PHILIPS	100-240VAC	IP65	>70	70x140	16500lm

LED Street Lights

Premium Series

Specifications:

Model: LC-T1M-Champ Series
 Type: LED Street Light in Replacement
 of Conventional Street Lights
 Equivalent to*: 400-500 High Pressure
 Sodium Lamps
 Chipset: Philips
 LED Type: SMD
 Lamp Rated Power: 40 W
 Total Luminous Flux: 4400lm
 Color Temperature (CCT)
 Cool White: 5700-6000
 Warm White: 2700-3200k
 Beam Angle: 70-140 Deg
 Cover: Lens
 Input Voltage: AC100-240
 Frequency: 50-60Hz
 Power Factor (PF): 0.95
 Total Harmonics Distortion (THDs): <20%
 Storage Temperature: -40-+80C
 Working Environment: -37-+55C
 Working Life: >50,000 Hrs
 IP Class: IP65
 Driver: Philips Constant Current Driver
 Surge Protection: 5KV External



LC-T1M-Champ



Model #	Power	Equivalent to*	SMD Brand	Voltage	IP Class	CRI	Beam Angle	Lumen
LC-T1M-C	20W	70W	PHILIPS	100-240VAC	IP65	>70	70x140	2200lm
	35W	100W	PHILIPS	100-240VAC	IP65	>70	70x140	3850lm

Lightcare (pvt) Ltd.

Contact:

0322-4965616
0321-4965616

✉ info@lightcare.com.pk

Visit:

www.Lightcare.com
[Facebook/lightcare.ltd](https://www.facebook.com/lightcare.ltd)